

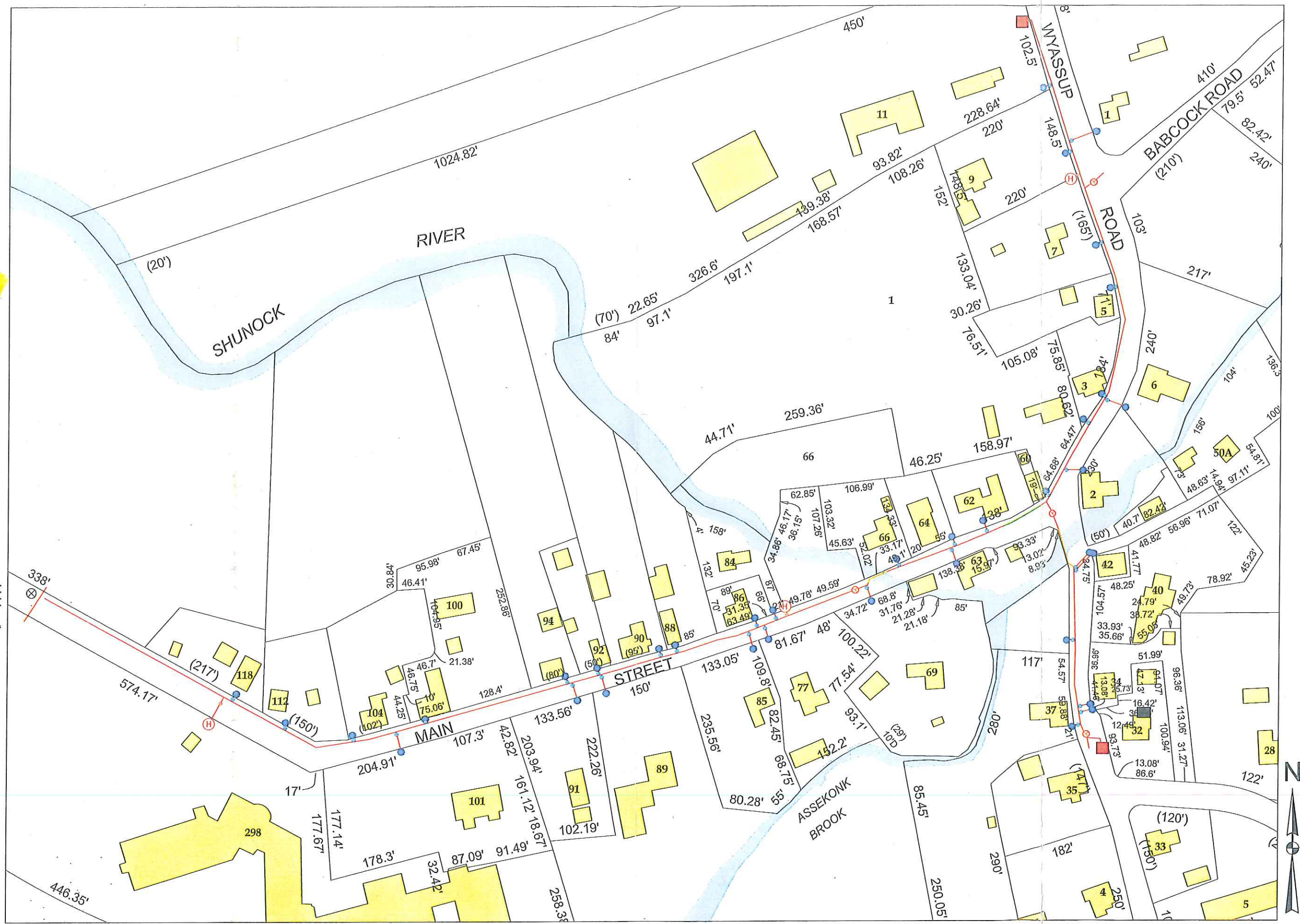
North
Stonington
Connecticut



SCWA
Waterline
Extension
to
Town Hall

June 24, 2008
Final As-Built

- Legend**
- New Waterline Points
PointType
Curb Stop Valve
Corporation Stop Valve
Flushing Block
Existing Gate Valve
Gate Valve
Hydrant Gate Valve 6"
Hydrant
- New Waterline
Line_Type
Insulated Pipe
New Waterline - Sleeved Pipe
New Waterline
- Main Waterline Piping 8"
Hydrant Piping 6"
Flushing Block Piping 2"
Curb Stop Piping 1"
- New Waterline - Insulated Pipe Is 6" Pipe With 2" High Density Insulation
New Waterline - Sleeved Pipe Is 6" Pipe Sleeved With 15" Pipe



Map #: 1573
Map Date: 02/23/2012
Notes
The water utility is not responsible for the accuracy of the information provided on this map. The user of this map is advised to verify the information on the ground before using it for any purpose. The water utility is not responsible for any damage or injury resulting from the use of this map.





VICINITY
OF
NORTH
STONINGTON
VILLAGE

PHASE III

Legend

- Parcels
- Structures - 2011
- Access Way - 2011
- Waterline**
- Existing Waterline
- Proposed Addition
- Proposed EMS Addition
- Water Features**
- Lakes and Ponds
- Streams
- DEEP Soils - 2007**
- Alluvial and floodplain soils
- PD and VPD soils
- Poorly drained soils
- Very poorly drained soils

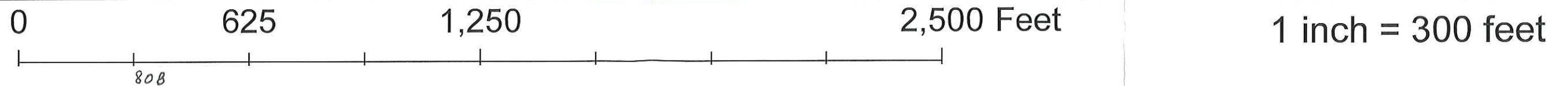
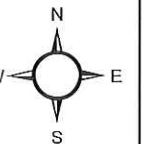
Map #: 1954R7
Map Date: 3/20/2015

Notes

THIS MAP IS PREPARED FOR THE INVENTORY OF REAL PROPERTY FOUND WITHIN THESE JURISDICTIONS AND IS COMPILED FROM RECORDED DEEDS, PLATS, AND OTHER PUBLIC RECORDS AND DATA. USERS OF THE MAP ARE HEREBY NOTIFIED THAT THE FOREMENTIONED PUBLIC PRIMARY INFORMATION SOURCES SHOULD BE CONSULTED FOR VERIFICATION OF THE INFORMATION CONTAINED ON THIS MAP. THE TOWNS AND THE MAPPING COMPANIES ASSUME NO LEGAL RESPONSIBILITY FOR THE INFORMATION CONTAINED ON THIS MAP. HORIZONTAL DATUM BASED ON THE CONNECTICUT STATE PLANE COORDINATE SYSTEM, NAD83.



New Emergency
Services Facility
Building Site





SCWA
Waterline
Extension
to
Grange
and
EMS
Facility

Legend

- Parcel Lines - 2014
- Curb Stop Valve
- Corporation Stop Valve
- Flushing Block
- Gate Valve
- Hydrant Gate Valve 6"
- Hydrant
- Proposed Addition
- Insulated Pipe
- Waterline - Sleeved Pipe
- Waterline

Main Waterline Piping 8"
Hydrant Piping 6"
Flushing Block Piping 2"
Curb Stop Piping 1"

Waterline - Insulated Pipe Is
8" Pipe With 2" High Density
Insulation

Waterline - Sleeved Pipe Is
8" Pipe Sleeved With 15" Pipe

Map #: 2016 R3
Map Date: 03/27/2015

Notes

NOTES: This map was prepared for the purpose of showing the location of the proposed waterline extension to the Grange and EMS Facility. It is not intended to be used for any other purpose. The map is based on the best available information and is not a guarantee of accuracy. The map is subject to change without notice.

