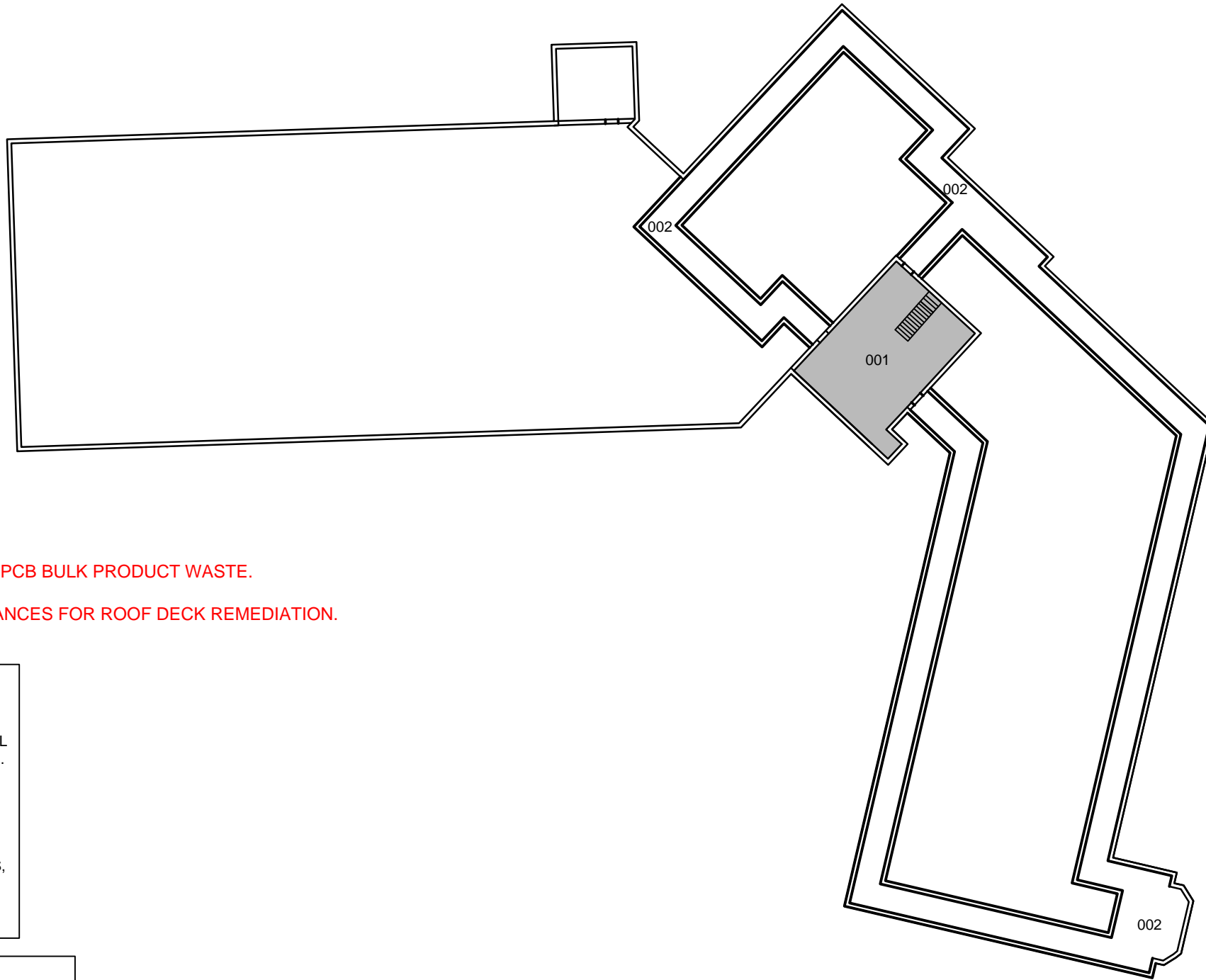
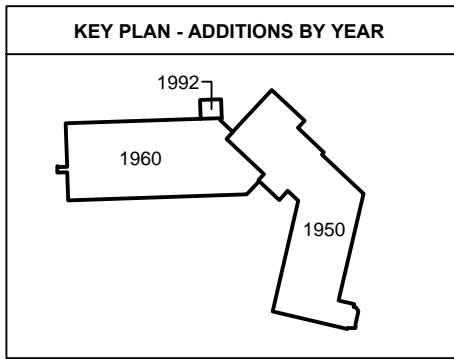


SIDE-C



SIDE-B

- 1 WASTE DISPOSITION CHANGED FROM CR01 TO PCB BULK PRODUCT WASTE.
- 2 DEFINED LOCATIONS OF BASE BID AND ALLOWANCES FOR ROOF DECK REMEDIATION.

**PCB REMEDIATION NOTES:**

- THROUGHOUT 1950 BUILDING AND 1960 ADDITION:
1. REMOVE ALL PAINTED WALLS AND PARTITIONS. REMOVE ALL ASSOCIATED ADHESIVES, CAULKS, GLAZING COMPOUNDS, ETC. DISPOSE OF AS PCB BULK PRODUCT WASTE.
  2. REMOVE ALL PAINTED STRUCTURAL STEEL. DISPOSE OF AS PCB BULK PRODUCT WASTE AND RCRA LEAD WASTE.
  3. REMOVE ALL DOORS, DOORFRAMES, LOUVERS AND LINTELS, AND ALL ASSOCIATED CAULKS. DISPOSE OF AS PCB BULK PRODUCT WASTE.

**PCB REMEDIATION KEY:**

- REMOVE BRICK FACADE, WINDOW UNITS, CAULK AND GLAZING COMPOUNDS. DISPOSE OF AS PCB BULK PRODUCT WASTE.
- REMOVE VINYL FLOOR TILE AND MASTIC. DISPOSE OF AS PCB BULK PRODUCT WASTE.
- REMOVE FIBER BOARD ROOF DECK. DISPOSE OF AS PCB REMEDIATION WASTE >50 PPM.
- REMOVE PAINT FROM INTERIOR CONCRETE WALLS, FLOORS, AND CEILINGS. DISPOSE OF AS PCB BULK PRODUCT WASTE.

**BASEMENT AND TUNNELS**  
NOT TO SCALE

DATE: 6/16/2017  
PROJECT NO.: 17-013.13T2  
STATE PROJECT NO.: 102-0024 EA/RR  
DRAWN BY: BB  
REVIEWED BY: JT

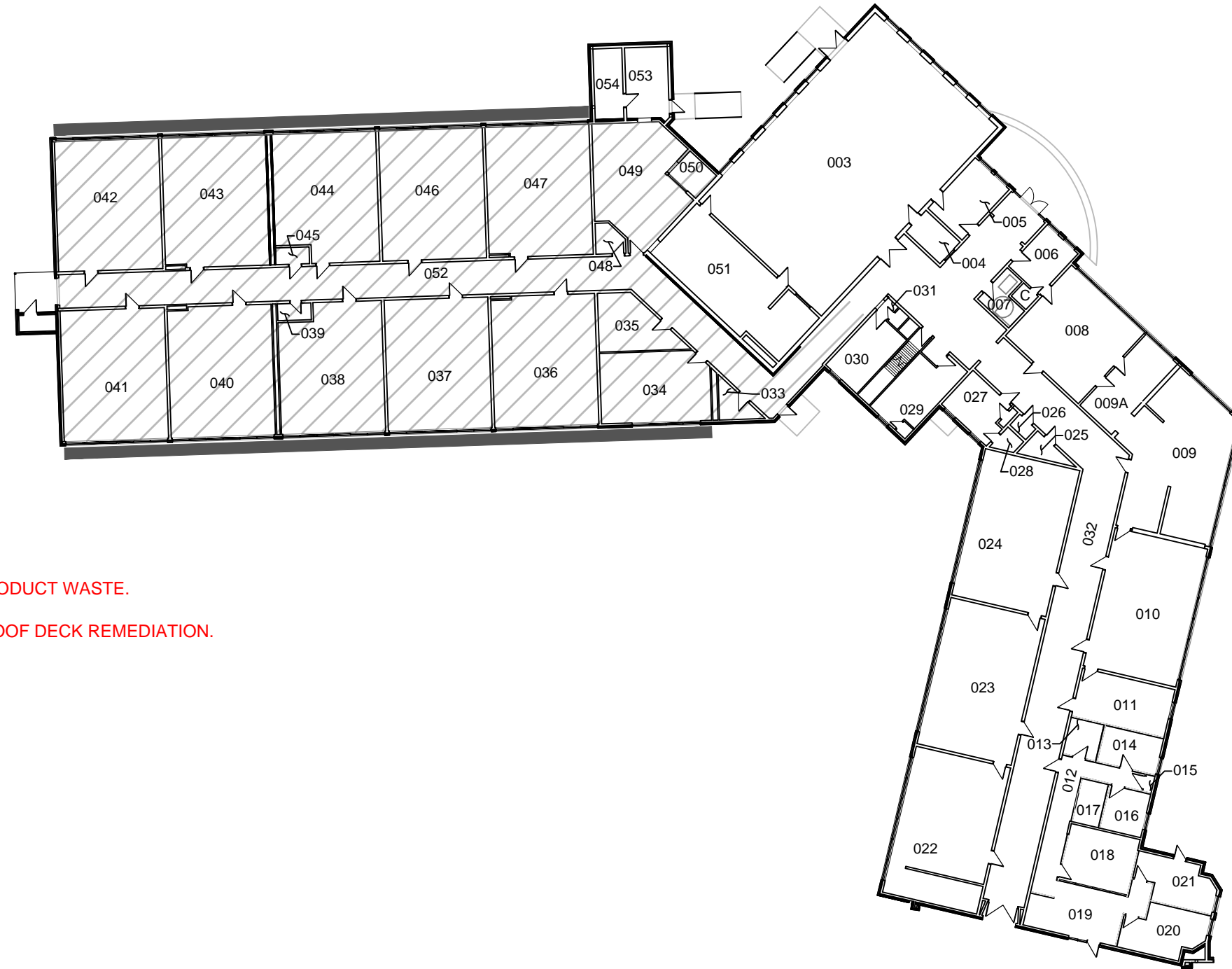
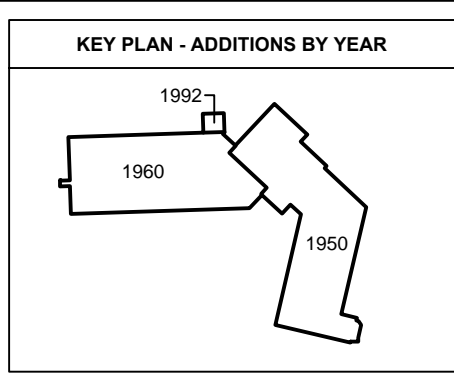
**ON-SITE PCB CLEANUP AND DISPOSAL PLAN**  
WHEELER ELEMENTARY SCHOOL  
298 NORWICH-WESTERLY ROAD  
NORTH STONINGTON, CONNECTICUT



SHEET NO.  
**SIP-1**  
SHEET: 1 OF 3

SIDE-D

SIDE-C



- 1 WASTE DISPOSITION CHANGED FROM CR01 TO PCB BULK PRODUCT WASTE.
- 2 DEFINED LOCATIONS OF BASE BID AND ALLOWANCES FOR ROOF DECK REMEDIATION.

**PCB REMEDIATION NOTES:**

THROUGHOUT 1950 BUILDING AND 1960 ADDITION:

1. REMOVE ALL PAINTED WALLS AND PARTITIONS. REMOVE ALL ASSOCIATED ADHESIVES, CAULKS, GLAZING COMPOUNDS, ETC. DISPOSE OF AS PCB BULK PRODUCT WASTE.
2. REMOVE ALL PAINTED STRUCTURAL STEEL. DISPOSE OF AS PCB BULK PRODUCT WASTE AND RCRA LEAD WASTE.
3. REMOVE ALL DOORS, DOORFRAMES, LOUVERS AND LINTELS, AND ALL ASSOCIATED CAULKS. DISPOSE OF AS PCB BULK PRODUCT WASTE.

**PCB REMEDIATION KEY:**

- REMOVE BRICK FACADE, WINDOW UNITS, CAULK AND GLAZING COMPOUNDS. DISPOSE OF AS PCB BULK PRODUCT WASTE.
- REMOVE VINYL FLOOR TILE AND MASTIC. DISPOSE OF AS PCB BULK PRODUCT WASTE.
- REMOVE FIBER BOARD ROOF DECK. DISPOSE OF AS PCB REMEDIATION WASTE >50 PPM.
- REMOVE PAINT FROM INTERIOR CONCRETE WALLS, FLOORS, AND CEILINGS. DISPOSE OF AS PCB BULK PRODUCT WASTE.

**MAIN LEVEL**  
NOT TO SCALE

DATE: 6/16/2017  
PROJECT NO.: 17-013.13T2  
STATE PROJECT NO.: 102-0024 EA/RR  
DRAWN BY: BB  
REVIEWED BY: JT

**ON-SITE PCB CLEANUP AND DISPOSAL PLAN**  
WHEELER ELEMENTARY SCHOOL  
298 NORWICH-WESTERLY ROAD  
NORTH STONINGTON, CONNECTICUT



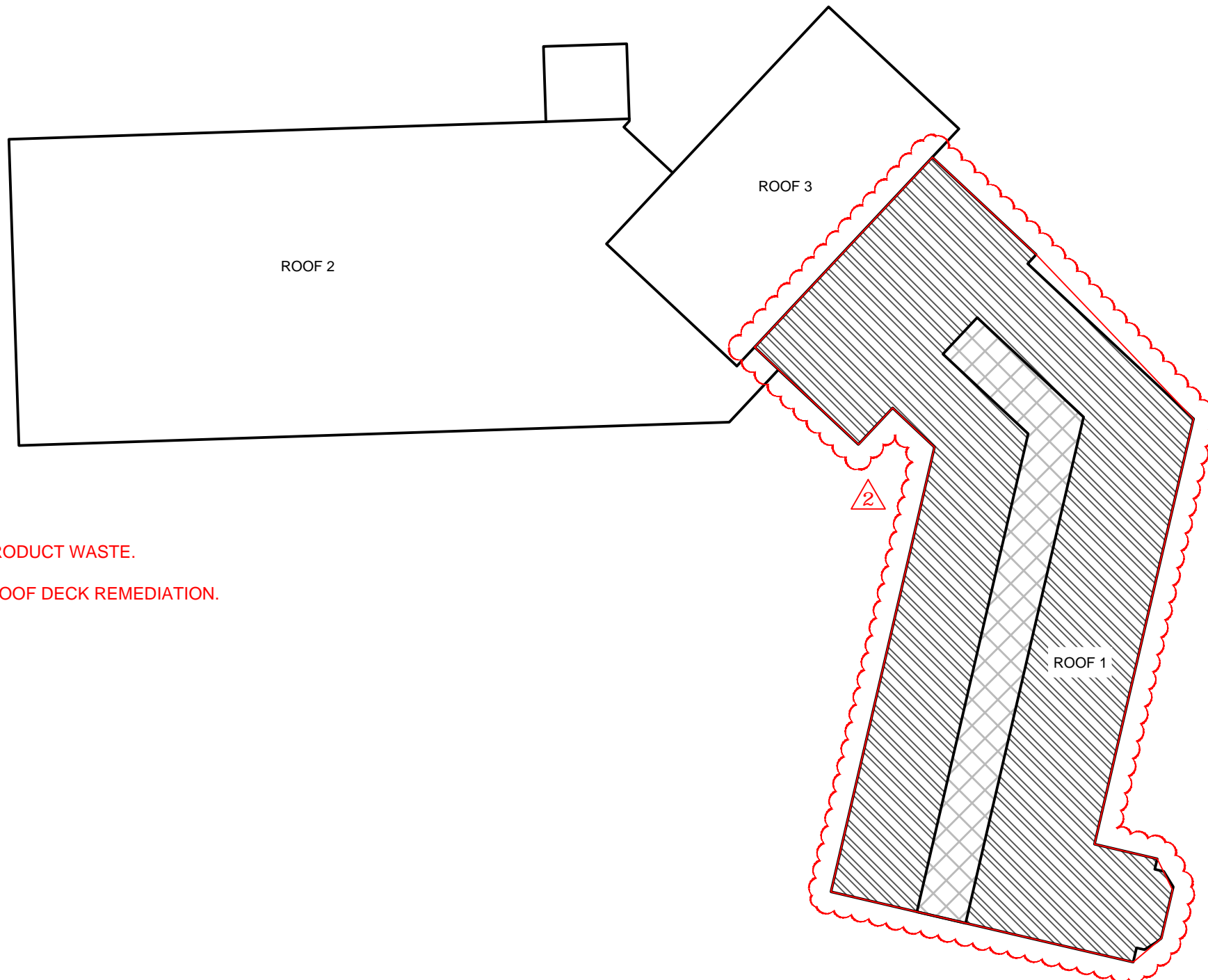
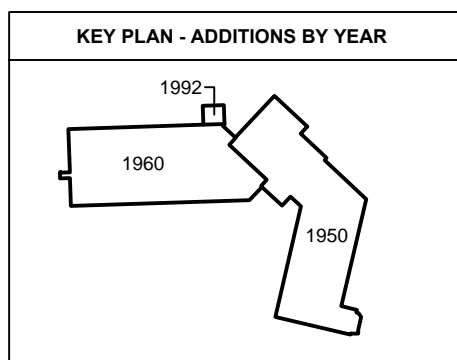
SHEET NO.  
**SIP-2**  
SHEET: 2 OF 3

SIDE-B

SIDE-D

SIDE-A (STREET SIDE)

SIDE-C



- 1 WASTE DISPOSITION CHANGED FROM CR01 TO PCB BULK PRODUCT WASTE.
- 2 DEFINED LOCATIONS OF BASE BID AND ALLOWANCES FOR ROOF DECK REMEDIATION.

**PCB REMEDIATION NOTES:**

THROUGHOUT 1950 BUILDING AND 1960 ADDITION:

1. REMOVE ALL PAINTED WALLS AND PARTITIONS. REMOVE ALL ASSOCIATED ADHESIVES, CAULKS, GLAZING COMPOUNDS, ETC. DISPOSE OF AS PCB BULK PRODUCT WASTE.
2. REMOVE ALL PAINTED STRUCTURAL STEEL. DISPOSE OF AS PCB BULK PRODUCT WASTE AND RCRA LEAD WASTE. 1
3. REMOVE ALL DOORS, DOORFRAMES, LOUVERS AND LINTELS, AND ALL ASSOCIATED CAULKS. DISPOSE OF AS PCB BULK PRODUCT WASTE.

**PCB REMEDIATION KEY:**

- REMOVE BRICK FACADE, WINDOW UNITS, CAULK AND GLAZING COMPOUNDS. DISPOSE OF AS PCB BULK PRODUCT WASTE.
- REMOVE VINYL FLOOR TILE AND MASTIC. DISPOSE OF AS PCB BULK PRODUCT WASTE.
- REMOVE FIBER BOARD ROOF DECK. DISPOSE OF AS PCB REMEDIATION WASTE >50 PPM. 1
- REMOVE PAINT FROM INTERIOR CONCRETE WALLS, FLOORS, AND CEILINGS. DISPOSE OF AS PCB BULK PRODUCT WASTE.
- ALLOWANCE**  
 REMOVE FIBER BOARD ROOF DECK. DISPOSE OF AS PCB REMEDIATION WASTE > 50ppm.

**ROOF**  
NOT TO SCALE

DATE: 6/16/2017  
 PROJECT NO.: 17-013.13T2  
 STATE PROJECT NO.: 102-0024 EA/RR  
 DRAWN BY: BB  
 REVIEWED BY: JT

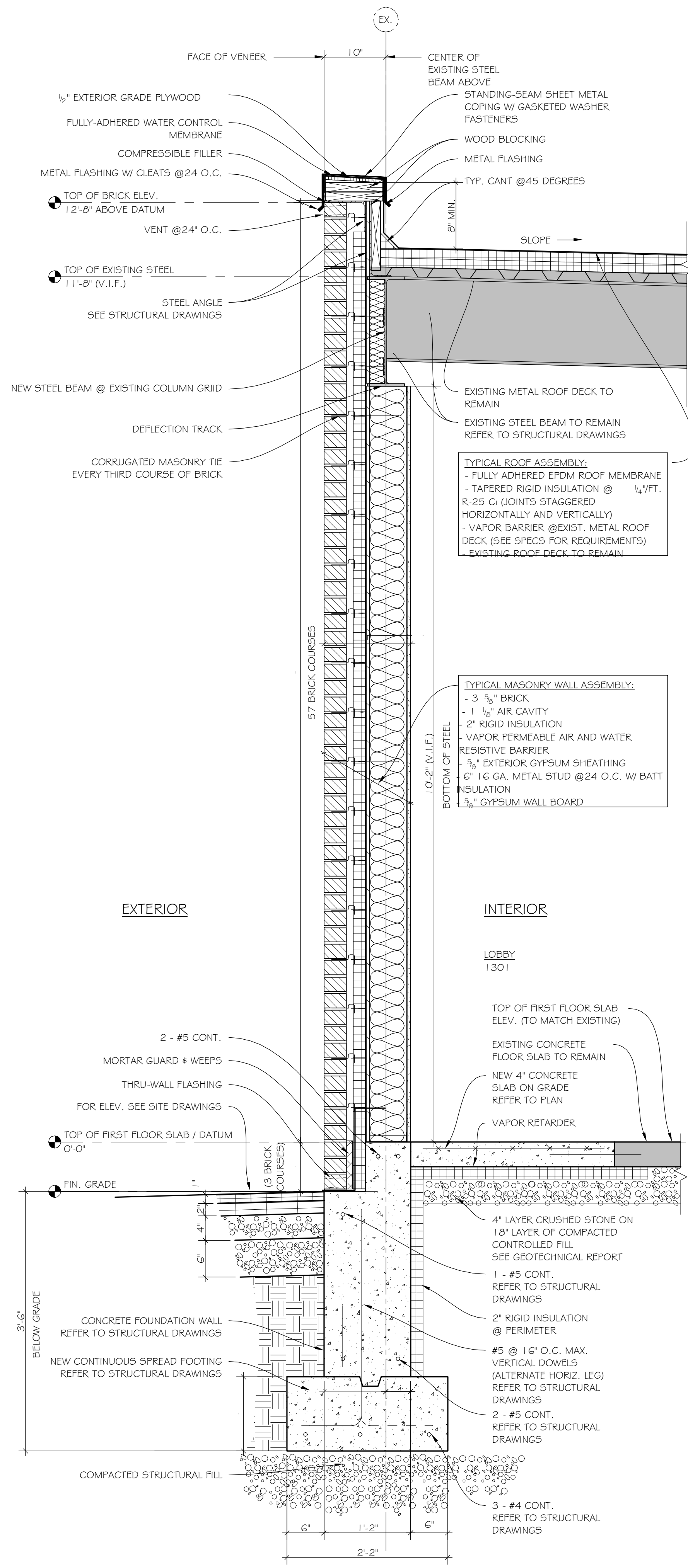
**ON-SITE PCB CLEANUP AND DISPOSAL PLAN**  
 WHEELER ELEMENTARY SCHOOL  
 298 NORWICH-WESTERLY ROAD  
 NORTH STONINGTON, CONNECTICUT



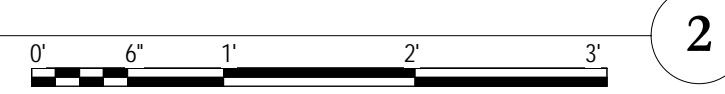
SHEET NO.  
**SIP-3**  
 SHEET: 3 OF 3

SIDE-B

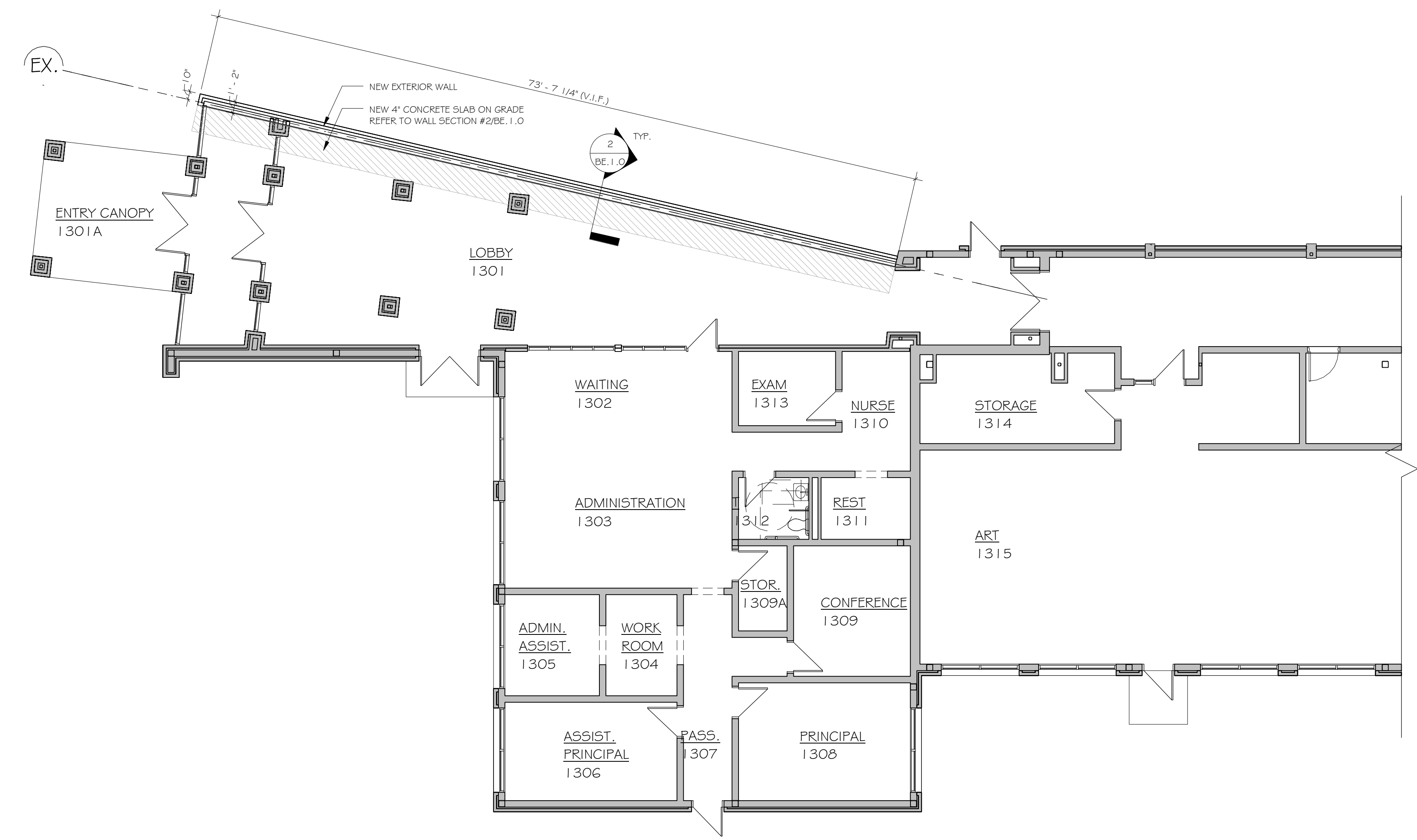
SIDE-D



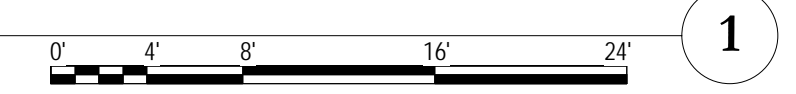
**WALL SECTION**  
1" = 1'-0"



2



**BOARD OF EDUCATION - PARTIAL FIRST FLOOR PLAN**  
1/8" = 1'-0"



1



**QUISENBERRY ARCARI ARCHITECTS, LLC**

www.qa-architects.com  
T (860) 677-4594  
F (860) 677-8534  
318 Main Street  
Farmington, CT 06032

ADDITIONS AND RENOVATIONS TO:  
**North Stonington High School / Middle School**  
297 Norwich-Westerly Rd. North Stonington, CT

Sheet Description:

**BOARD OF EDUCATION PARTIAL PLAN & WALL SECTION**

State Project #:

**102-0024 EA/RR**

Issue Dates:

CONFORMANCE SET 02-14-2016

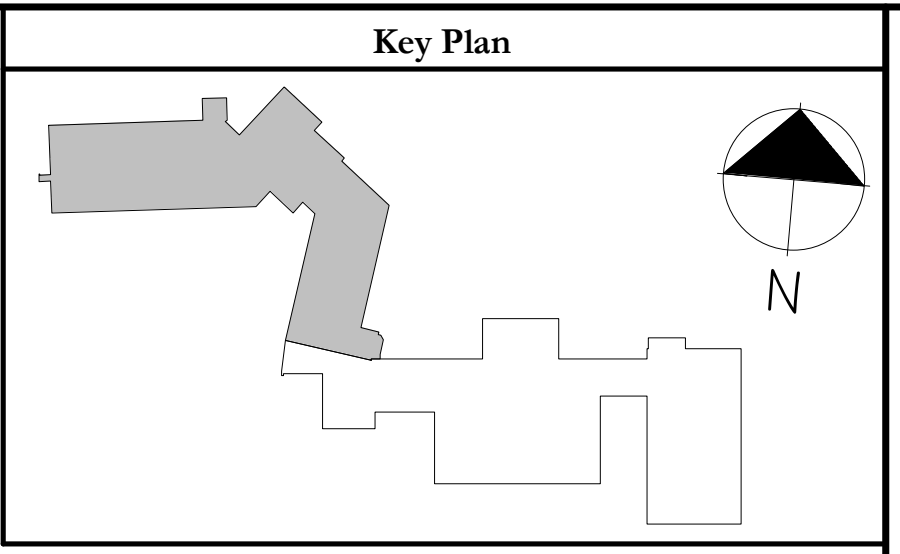
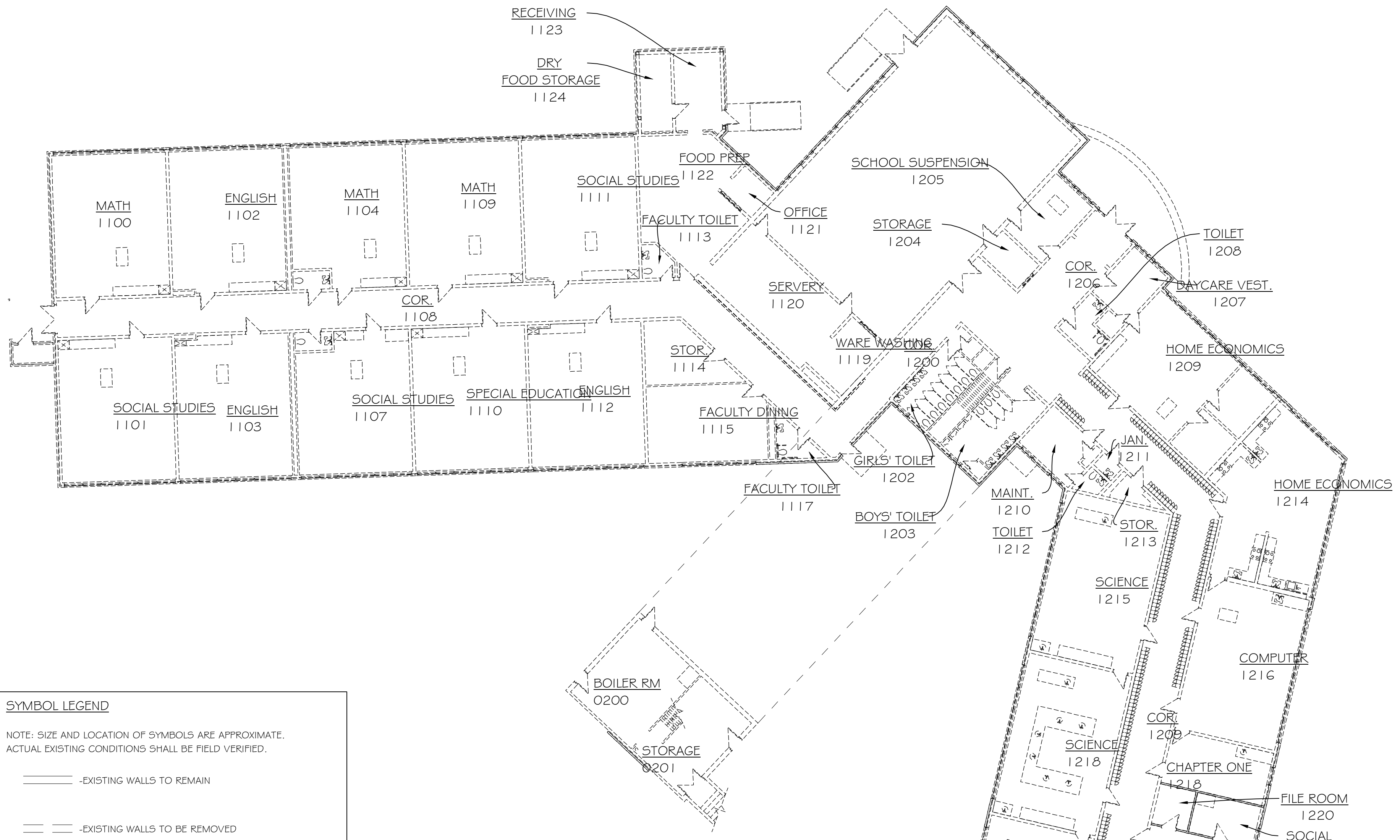
Revisions:


Project #:

**102-0024-EA/RR**

Sheet #:

**BE.1.0**



**QUISENBERRY ARCARI ARCHITECTS, LLC**  
 www.qa-architects.com  
 T (860) 677-4594  
 F (860) 677-8534  
 318 Main Street  
 Farmington, CT 06032

**DEMOLITION KEYNOTES**

NOTE: ARCHITECTURAL DRAWINGS DO NOT SHOW LOCATIONS OF ALL PIPING, PLUMBING FIXTURES, CONDUCITS, OUTLETS, SWITCHES, ELECTRICAL DEVICES, ETC. AND LOCATIONS WHERE CUTTING & PATCHING IS REQUIRED BUT RATHER ARE INTENDED TO INDICATE GENERAL REQUIREMENTS. THE CONTRACTOR SHALL BE RESPONSIBLE FOR ASCERTAINING AND COORDINATING ALL LOCATIONS OF SUCH WORK BASED ON A COMBINATION OF ALL DRAWINGS ARCHITECTURAL, MECHANICAL, ELECTRICAL, FIRE PROTECTION AND PLUMBING.

- THE INTENT OF THE DEMOLITION PLANS IS TO SHOW THE GENERAL NATURE OF THE DEMOLITION SCOPE. THE GENERAL CONTRACTOR IS RESPONSIBLE FOR VISITING THE JOB SITE AND VERIFYING THE EXISTING CONDITION. THE GENERAL CONTRACTOR SHOULD NOTIFY THE ARCHITECT IMMEDIATELY OF ANY DISCREPANCIES.
- COORDINATE AND VERIFY WITH THE OWNER ALL ITEMS TO BE SALVAGED PRIOR TO DEMOLITION. THESE ITEMS MAY INCLUDE, BUT NOT LIMITED TO THE FOLLOWING:
  - LAB CASEWORK AND/OR EQUIPMENT
  - SUSPENDED CEILING COMPONENTS
  - LIGHT FIXTURES
  - DOOR(S) AND WINDOW(S)
  - EXISTING FURNITURE
  - EXISTING FIXED FURNITURE
- GENERAL CONTRACTOR IS TO MAINTAIN A SEPARATION BETWEEN AREAS WITHIN THE SCOPE OF WORK BY PROVIDING PLASTIC SHEATHING BETWEEN CONTIGUOUS SPACES AND/OR TEMPORARILY TAPING OF JOINTS AND GAPS TO PREVENT DUST MIGRATION.
- CAUSE NO DAMAGE TO EXISTING CONSTRUCTION TO REMAIN. TAKE CARE NOT TO ENCROACH ON ADJACENT OCCUPIED AREAS OR AREAS NOT WITHIN THE SCOPE OF WORK. PROJECT ALL EXISTING FINISHES, DOORS, FRAMES, ETC. WHICH ARE TO REMAIN.
- USE ALL MEANS NECESSARY TO PREVENT THE SPREAD OF DUST TO ADJACENT AREAS.
- CONDUCT DEMOLITION OPERATIONS & THE REMOVAL OF DEBRIS TO ENSURE MINIMUM INTERFERENCE WITH STREETS, WALKS, & OTHER ADJACENT OCCUPIED OR USED FACILITIES. COMPLY WITH LOCAL JURISDICTION REQUIREMENTS FOR RECYCLING AND TREATMENT OF ITEMS TO BE RECYCLED.
- DISPOSE OF ALL DEMOLISHED OR REMOVED MATERIALS LEGALLY OFF THE SITE. COMPLY WITH ALL LOCAL HAULING & DISPOSAL REQUIREMENTS.
- THE ARCHITECT HAS NO KNOWLEDGE OF AND SHALL NOT BE HELD LIABLE FOR ANY ASBESTOS OR OTHER HAZARDOUS MATERIALS ON JOBSITE. THE CONTRACTOR SHALL IMMEDIATELY ISOLATE THE AFFECTED AREA IF ASBESTOS OR OTHER HAZARDOUS MATERIAL ARE DISCOVERED DURING CONSTRUCTION. NOTIFY OWNER FOR FURTHER INSTRUCTION BEFORE PROCEEDING WITH OTHER WORK.
- MAINTAIN EXISTING UTILITIES TO REMAIN IN SERVICE AND PROTECT AGAINST DAMAGE DURING DEMOLITION OPERATION.
- SCHEDULE ALL SERVICE SHUT-DOWN(S) WITH THE OWNER. NOTIFY OWNER A MINIMUM TIME OF ONE (1) WEEK AND ADDITIONALLY ONE (1) HOUR PRIOR TO SHUT-DOWN(S).
- REMOVE ALL ABANDONED ANCHOR BOLTS & EMBEDDED ITEMS IN CONCRETE FLOORS THAT PROTRUDE ABOVE THE CONCRETE FLOOR SURFACE.
- REFER TO STRUCTURAL, MECHANICAL, ELECTRICAL & PLUMBING DRAWINGS FOR SPECIFIC DEMOLITION NOTES REGARDING THESE DISCIPLINES. ALL HVAC, ELECTRICAL AND PLUMBING ITEMS REMOVED SHALL BE CAPPED AND IDENTIFIED.
- UPON COMPLETION, CLEAN THE ENTIRE AREA OF DEMOLITION TO A TIDY, UNIFORM CONDITION REMOVING ALL DEBRIS, DUST PARTITIONS & ASSOCIATED MATERIALS USED DURING THE DEMOLITION. CLEAN ALL AREAS IMPACTED BY THE DEMOLITION, INCLUDING BUT NOT LIMITED TO, ADJACENT OCCUPIED AREAS AND AREAS NOT WITHIN THE SCOPE OF WORK.
- PROVIDE NEW SUPPORT RACK OR HANGERS FOR ABOVE CEILING ITEMS WHICH WERE ORIGINALLY SUPPORTED BY REMOVED WALLS.
- ABANDONING ITEMS OR UNUSED UTILITIES IN PLACE IS STRICTLY PROHIBITED UNLESS SPECIFICALLY PERMITTED BY THE OWNER.
- PATCH / PAINT / FINISHES: TAPE, PATCH, SAND SMOOTH, AND PAINT ALL EXISTING INTERIOR WALLS WHERE DAMAGED TO UPGRADE TO CLIENT-ACCEPTED CONDITION. ALL ADJACENT EXISTING FINISHES DAMAGED OR AFFECTED BY DEMOLITION OR CONSTRUCTION OF NEW AREAS IN SCOPE OF NEW AREAS IN SCOPE OF WORK SHALL BE PATCHED AND REPAIRED TO MEET CLIENT SATISFACTION.
- COMPLY WITH ALL STANDARD LOCAL, NATIONAL, STATE AND FEDERAL SAFETY REQUIREMENTS FOR DEMOLITION.

**SYMBOL LEGEND**

NOTE: SIZE AND LOCATION OF SYMBOLS ARE APPROXIMATE. ACTUAL EXISTING CONDITIONS SHALL BE FIELD VERIFIED.

- EXISTING WALLS TO REMAIN
- EXISTING WALLS TO BE REMOVED
- EXISTING DOOR AND FRAME TO BE REMOVED
- EXISTING WINDOW TO BE REMOVED
- NOT IN SCOPE OF WORK

CONTRACTOR IS RESPONSIBLE FOR REPAIRS & PAYMENT FOR ALL UTILITIES DAMAGED DURING CONSTRUCTION.

CONTRACTOR TO RETURN SITE TO ORIGINAL CONDITION AFTER INSTALLATION OF ALL NEW SITE WORK.

**WARNING**

"CALL BEFORE YOU DIG"  
 1-800-922-4455

CONTRACTOR SHALL REGISTER THEIR INTENT TO START EXCAVATIONS AT OR NEAR A PUBLIC UTILITY AT LEAST (2) FULL WORKING DAYS PRIOR TO THE ACTIVITY.

CONTRACTOR TO MARK THE INTENDED EXCAVATION AREA WITH WHITE MARKING PAINT PRIOR TO CALLING CALL BEFORE YOU DIG.

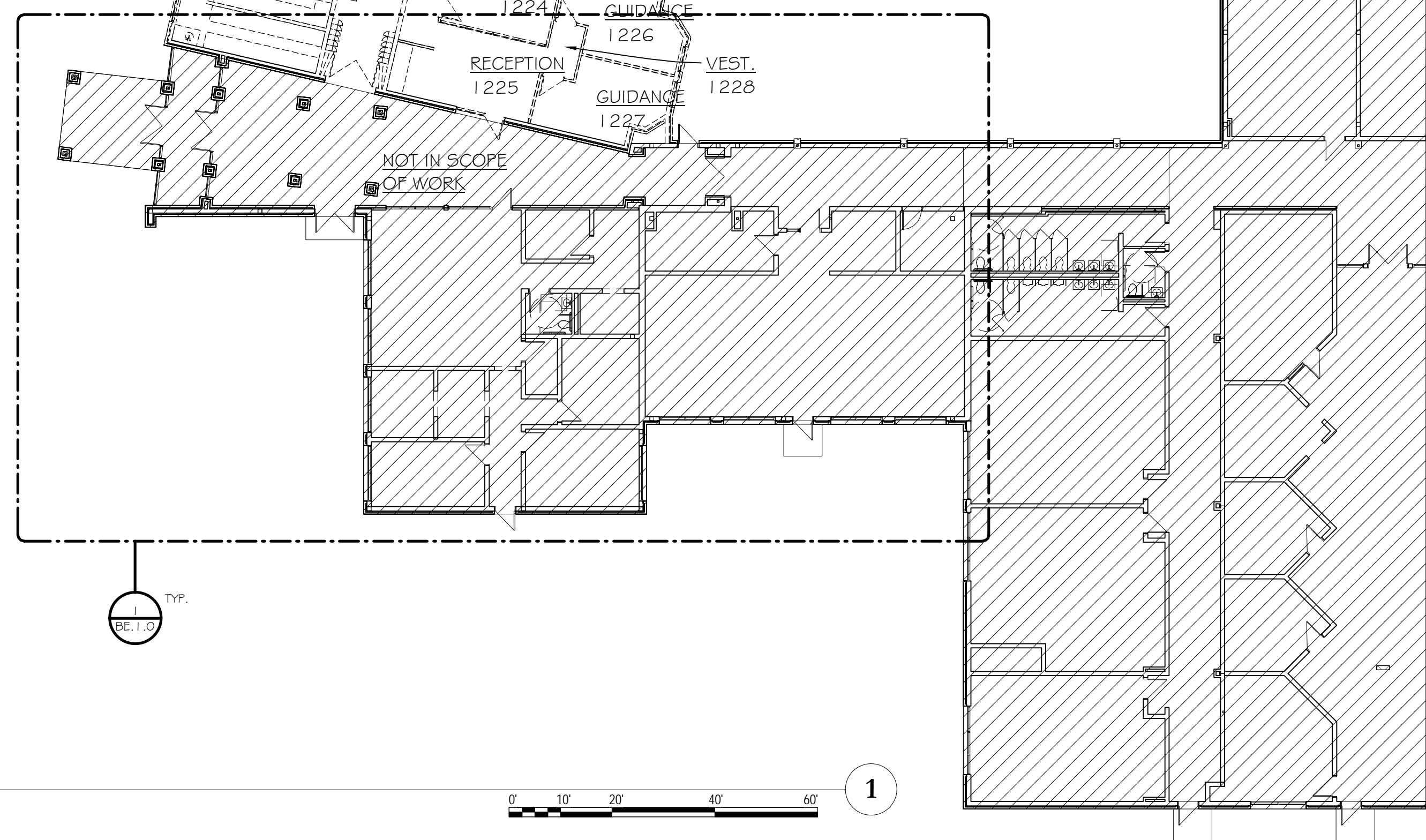
WWW.CBYD.COM

**ONSITE UNDERGROUND "PRIVATE" UTILITIES**

CONTRACTOR IS TO OBTAIN THE SERVICES OF A THIRD PARTY "PRIVATE" UNDERGROUND UTILITY MARKING COMPANY PRIOR TO ANY EXCAVATION AS PART OF THE BASE BID TO MARK THE LOCATIONS OF UTILITIES NOT COVERED BY CALL BEFORE YOU DIG. WORK BY THE CONTRACTOR & MARKING COMPANY IS TO INCLUDE BUT NOT LIMITED TO IDENTIFYING & MARKING LOCATIONS OF SEWER / SANITARY, WATER, GAS, ELECTRICAL, PHONE, CABLE & OTHER MISCELLANEOUS UNDERGROUND UTILITY LINES.

**DEMOLITION BASEMENT PLAN**

1/16" = 1'-0"



**DEMOLITION PLAN**

1/16" = 1'-0"

**ADDITIONS AND RENOVATIONS TO:**  
**North Stonington High School / Middle School**  
 297 Norwich-Westerly Rd. North Stonington, CT

Sheet Description:  
**EXISTING MIDDLE SCHOOL DEMOLITION PLAN**

State Project #:  
**102-0024 EA/RR**

Issue Dates:  
 CONFORMANCE SET  
 02-14-2016

Revisions:

Addendum #2	9/22/2017

Project #:  
**102-0024-EA/RR**

Sheet #:

**D1.1.0**