

North Stonington Center for Emergency Services - Field Report #15 - 11-6-17 - 11-10-17

Prepared by Michael Faenza

Description

This field report contains observations from site activities performed during the week of November 10, 2017.

The purpose of this report is to document the progress of the project.

Subcontractors working on site this week:

- Suchocki & Son Inc. - Sitework
- Xenelis Construction - Pre-Engineered Building
- CE Electric - Electric
- Main Enterprises - Plumbing

Key Activities this week include:

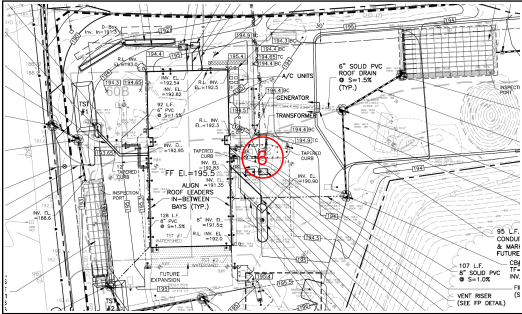
- Erection of Steel for Pre-Engineered Building - In Progress
- Installation of Site Bollards, Including pouring of Concrete - In Progress
- Installation of Septic System - In Progress
- Installation of Site Electrical - In Progress

Please see individual photos and locations within the report for specific detail of activities performed.

Contents

#125 November 6th	2
#126 November 6th	3
#127 November 8th	4
#129 November 9th	5
#130 November 9th	6
#131 November 9th	7
#133 November 10th	8
#134 November 10th	9

#125 November 6th



Sheet
C3

Status
Open

Created
Nov 6, 2017 at 3:03pm
mfaenza@crec.org

Last Updated
Nov 6, 2017 at 3:04pm

Description

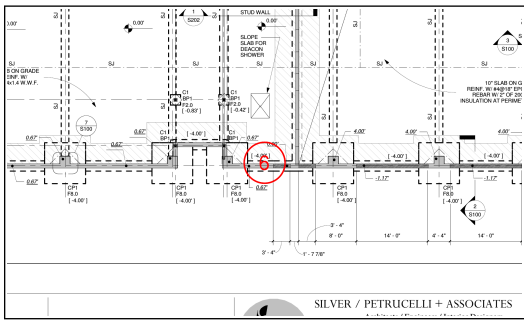
Installation of bollards in progress at rear of building.

Photos



Nov 6, 2017 at 3:04pm

#126 November 6th



Sheet
S100

Status
Open

Created
Nov 6, 2017 at 3:06pm
mfaenza@crec.org

Last Updated
Nov 6, 2017 at 3:07pm

Description

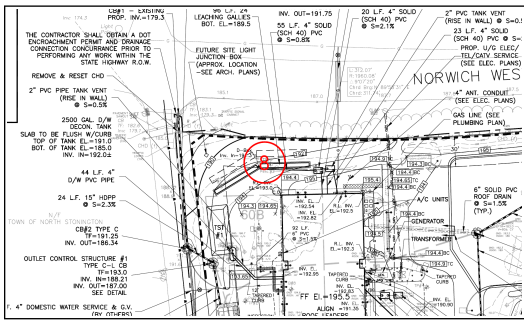
Steel installatio in progress on West side of building.

Photos



Nov 6, 2017 at 3:07pm

#127 November 8th



Sheet
C3

Status
Open

Created
Nov 8, 2017 at 1:19pm
mfaenza@crec.org

Last Updated
Nov 8, 2017 at 1:20pm

Description

Excavation and installation of septic leaching galleries is in progress.

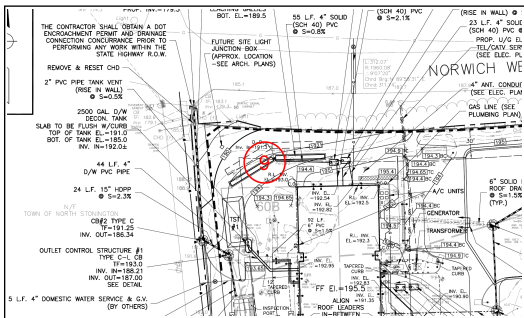
Photos



Nov 8, 2017 at 1:19pm

North Stonington Emergency Services Building

#129 November 9th



Sheet
C3

Status
Open

Created
Nov 9, 2017 at 4:07pm
mfaenza@crec.org

Last Updated
Nov 9, 2017 at 4:10pm

Description

Leaching galleries have been set and crushed stone has been installed.

Photos



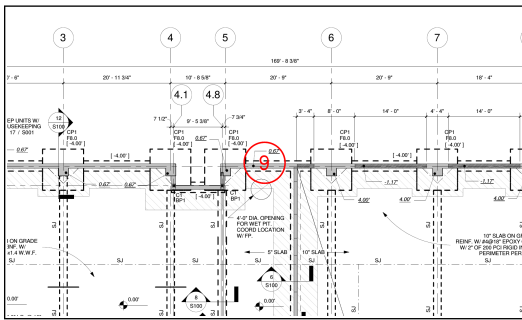
Nov 9, 2017 at 4:08pm



Nov 9, 2017 at 4:08pm

North Stonington Emergency Services Building

#130 November 9th



Sheet
S100

Status
Open

Created
Nov 9, 2017 at 4:11pm
mfaenza@crec.org

Last Updated
Nov 9, 2017 at 4:13pm

Description

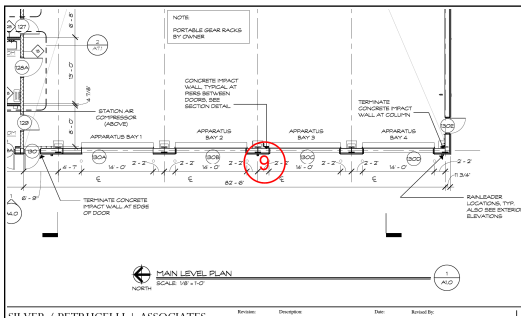
Steel installation in progress.

Photos



Nov 9, 2017 at 4:13pm

#131 November 9th



Sheet
A1.0

Status
Open

Created
Nov 9, 2017 at 4:17pm
mfaenza@crec.org

Last Updated
Nov 9, 2017 at 4:18pm

Description

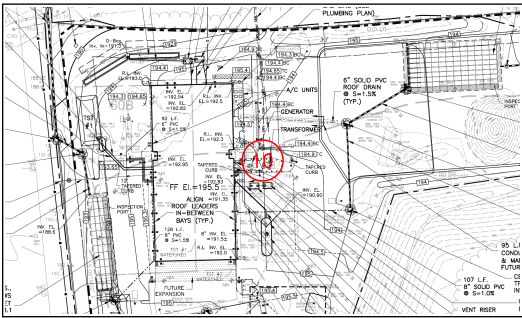
Bollard excavation in progress at apparatus bay door.

Photos



Nov 9, 2017 at 4:17pm

#133 November 10th



Sheet
C3

Status
Open

Created
Nov 10, 2017 at 11:28am
mfaenza@crec.org

Last Updated
Nov 10, 2017 at 11:29am

Description

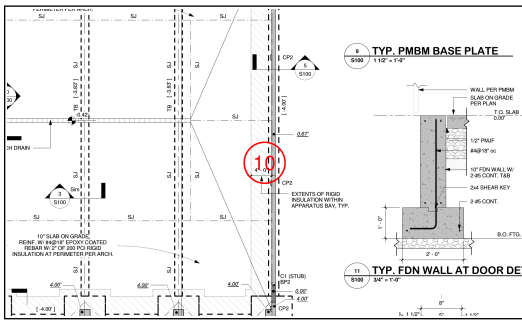
Bollards have been poured.

Photos



Nov 10, 2017 at 11:29am

#134 November 10th



Sheet
S100

Status
Open

Created
Nov 10, 2017 at 11:30am
mfaenza@crec.org

Last Updated
Nov 10, 2017 at 11:30am

Description

Building steel erection in progress.

Photos



Nov 10, 2017 at 11:30am

North Stonington Emergency Services Building
