

North Stonington Center for Emergency Services - Field Report #18 - 11-27-17 - 12-1-17

Prepared by Michael Faenza

Description

This field report contains observations from site activities performed during the week of December 1, 2017.

The purpose of this report is to document the progress of the project.

Subcontractors working on site this week:

- Suchocki & Son Inc. - Sitework
- Xenelis Construction - Pre-Engineered Building
- East Coast Wall System - Masonry
- Quality Welding, LLC. - Misc. Metal
- MCM Acoustics LLC - Framing & Drywall

Key Activities this week include:

- Erection of Steel for Pre-Engineered Building - In Progress
- Installation of Finish Grade Fire Protection Storage Tank Cap - In Progress
- Installation of Clips and Accessories for Pre-Engineered Metal Building - In Progress
- Installation of Misc Metal Supports for Storefront Entries and Kitchen Coiling Door - Complete
- Installation of Site Concrete Curbing and Sidewalks - In Progress
- Installation of Framing and sheating for Masonry Veneer Walls, including Weather Barrier - In Progress
- Installation of Sub-base and Site Grading - In Progress

Please see individual photos and locations within the report for specific detail of activities performed.

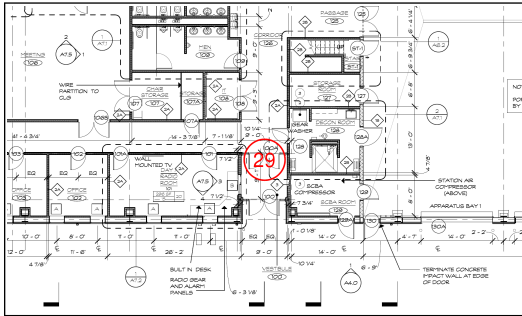
Contents

| | |
|------------------------------|----|
| #156 November 29th | 3 |
| #157 November 29th | 4 |
| #158 November 29th | 5 |
| #159 November 29th | 6 |
| #160 November 29th | 7 |
| #161 November 29th | 8 |
| #162 November 29th | 9 |
| #163 November 29th | 10 |

North Stonington Emergency Services Building

| | |
|------------------------------|----|
| #164 November 30th | 11 |
| #165 November 30th | 12 |
| #166 November 30th | 13 |
| #167 November 30th | 14 |
| #169 December 1st | 15 |

#156 November 29th



Sheet
A1.0

Status
Open

Created
Nov 29, 2017 at 3:21pm
mfaenza@crec.org

Last Updated
Nov 29, 2017 at 3:21pm

Description

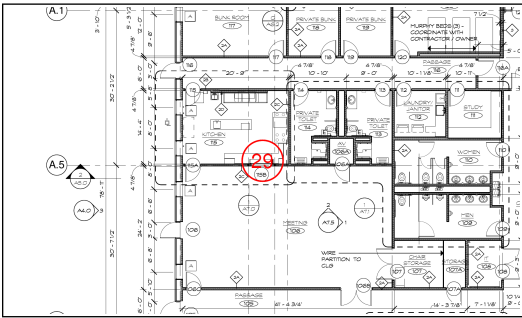
Steel support framing and wall framing in progress at entry vestibule.

Photos



Nov 29, 2017 at 3:21pm

#157 November 29th



Sheet
A1.0

Status
Open

Created
Nov 29, 2017 at 3:22pm
mfaenza@crec.org

Last Updated
Nov 29, 2017 at 3:22pm

Description

Steel support for kitchen coiling door has been installed.

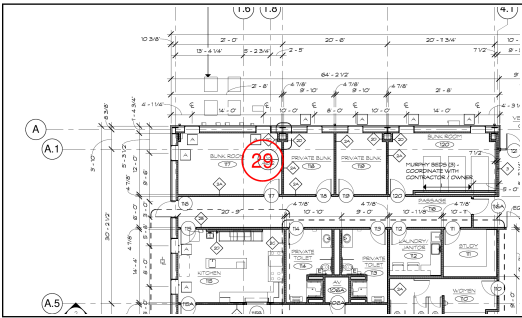
Photos



Nov 29, 2017 at 3:22pm

North Stonington Emergency Services Building

#158 November 29th



Sheet
A1.0

Status
Open

Created
Nov 29, 2017 at 3:22pm
mfaenza@crec.org

Last Updated
Nov 29, 2017 at 3:23pm

Description

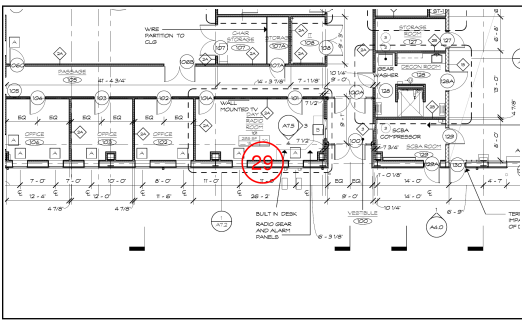
Door frames have been delivered.

Photos



Nov 29, 2017 at 3:22pm

#159 November 29th



Sheet
A1.0

Status
Open

Created
Nov 29, 2017 at 3:23pm
mfaenza@crec.org

Last Updated
Nov 29, 2017 at 3:23pm

Description

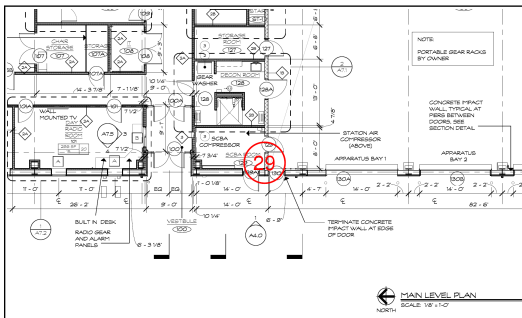
Framing and sheathing for masonry veneer has been installed.

Photos



Nov 29, 2017 at 3:23pm

#160 November 29th



Sheet
A1.0

Status
Open

Created
Nov 29, 2017 at 3:24pm
mfaenza@crec.org

Last Updated
Dec 5, 2017 at 3:09pm

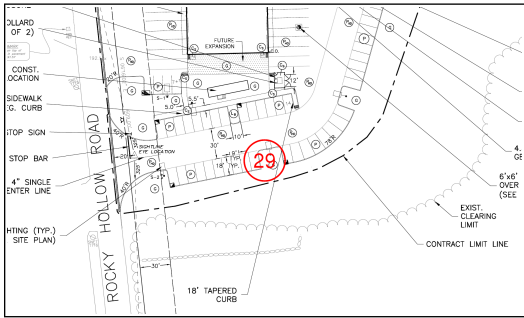
Description
Doors have been installed.

Photos



Nov 29, 2017 at 3:24pm

#161 November 29th



Sheet
C1

Status
Open

Created
Nov 29, 2017 at 3:25pm
mfaenza@crec.org

Last Updated
Nov 29, 2017 at 3:26pm

Description

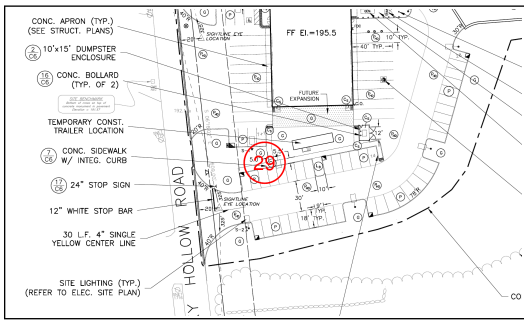
Concrete curbs are being installed.

Photos



Nov 29, 2017 at 3:26pm

#162 November 29th



Sheet
C1

Status
Open

Created
Nov 29, 2017 at 3:26pm
mfaenza@crec.org

Last Updated
Nov 29, 2017 at 3:27pm

Description

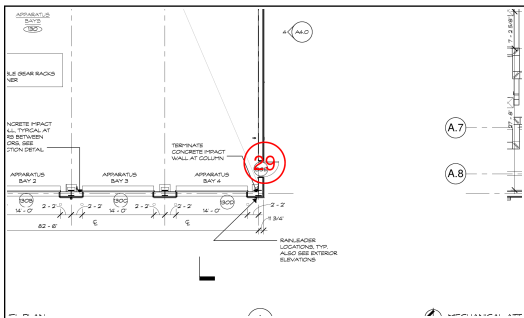
Concrete sidewalk has been installed.

Photos



Nov 29, 2017 at 3:27pm

#163 November 29th



Sheet
A1.0

Status
Open

Created
Nov 29, 2017 at 3:30pm
mfaenza@crec.org

Last Updated
Nov 30, 2017 at 3:39pm

Description

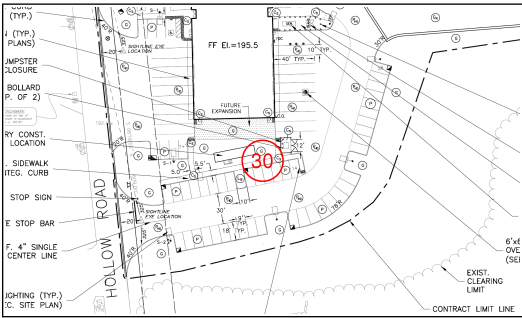
Mockup has been completed with metal panel.

Photos



Nov 29, 2017 at 3:30pm

#164 November 30th



Sheet
C1

Status
Open

Created
Nov 30, 2017 at 3:40pm
mfaenza@crec.org

Last Updated
Nov 30, 2017 at 3:40pm

Description

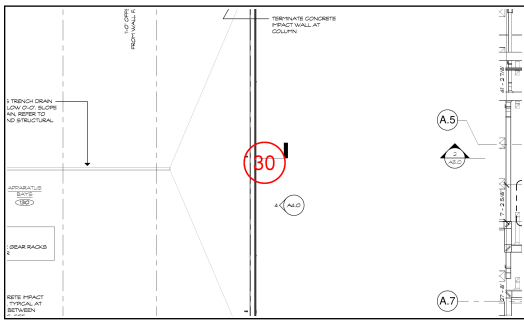
Concrete sidewalk has been placed.

Photos



Nov 30, 2017 at 3:40pm

#165 November 30th



Sheet
A1.0

Status
Open

Created
Nov 30, 2017 at 3:40pm
mfaenza@crec.org

Last Updated
Dec 5, 2017 at 3:09pm

Description

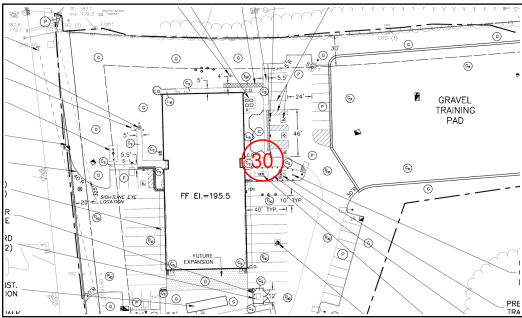
First layer of sheathing for stone veneer has been completed.

Photos



Nov 30, 2017 at 3:41pm

#166 November 30th



Sheet
C1

Status
Open

Created
Nov 30, 2017 at 3:47pm
mfaenza@crec.org

Last Updated
Nov 30, 2017 at 3:48pm

Description

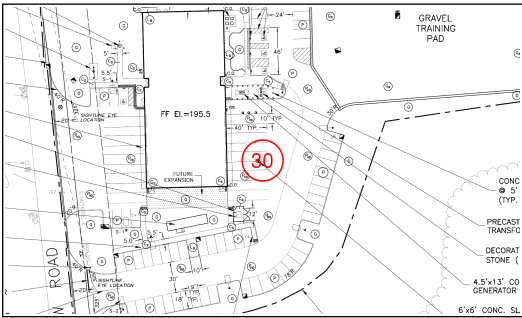
Sub base has been placed and compacted at rear entrance to building.

Photos



Nov 30, 2017 at 3:48pm

#167 November 30th



Sheet
C1

Status
Open

Created
Nov 30, 2017 at 3:49pm
mfaenza@crec.org

Last Updated
Dec 1, 2017 at 1:08pm

Description

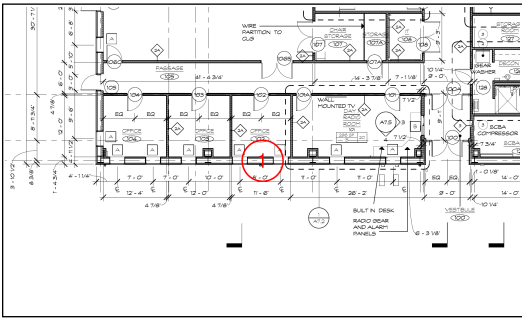
Final cap has been installed at fire protection storage tank.

Photos



Nov 30, 2017 at 3:49pm

#169 December 1st



Sheet
A1.0

Status
Open

Created
Dec 1, 2017 at 1:08pm
mfaenza@crec.org

Last Updated
Dec 1, 2017 at 1:09pm

Description

Weather barrier has been installed on masonry veneer low walls.

Photos



Dec 1, 2017 at 1:09pm

North Stonington Emergency Services Building
