

North Stonington Center for Emergency Services - Field Report #19 - 12-4-17 - 12-8-17

Prepared by Michael Faenza

Description

This field report contains observations from site activities performed during the week of December 8, 2017.

The purpose of this report is to document the progress of the project.

Subcontractors working on site this week:

- Suchocki & Son Inc. - Sitework
- Xenelis Construction - Pre-Engineered Building
- East Coast Wall System - Masonry
- MCM Acoustics LLC - Framing & Drywall

Key Activities this week include:

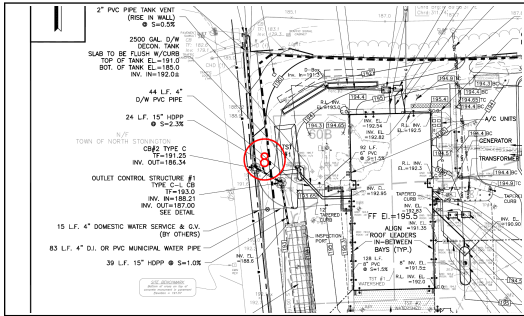
- Erection of Steel for Pre-Engineered Building - In Progress
- Installation of Roof Liner - In Progress
- Installation of sheathing for Masonry Veneer Walls, including Weather Barrier - Complete
- Installation of Trim for Masonry Veneer Walls -Complete
- Site Grading - In Progress

Please see individual photos and locations within the report for specific detail of activities performed.

Contents

#179 December 8th	2
#178 December 8th	3
#177 December 8th	4
#176 December 7th	5
#175 December 7th	6
#174 December 6th	7
#173 December 6th	8
#172 December 6th	9
#171 December 6th	10
#170 December 6th	11

#179 December 8th



Sheet
C3

Status
Open

Created
Dec 8, 2017 at 12:27pm
mfaenza@crec.org

Last Updated
Dec 8, 2017 at 12:27pm

Description

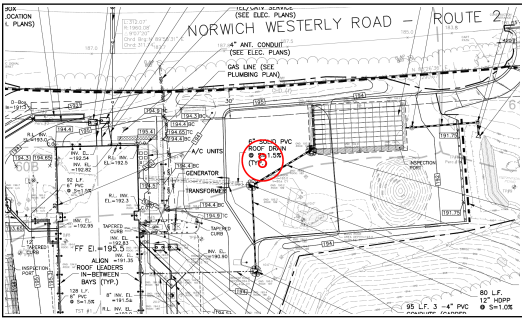
Grading and dressing in progress at the end of Rocky Hollow Road.

Photos



Dec 8, 2017 at 12:27pm

#178 December 8th



Sheet
C3

Status
Open

Created
Dec 8, 2017 at 12:12pm
mfaenza@crec.org

Last Updated
Dec 8, 2017 at 12:27pm

Description

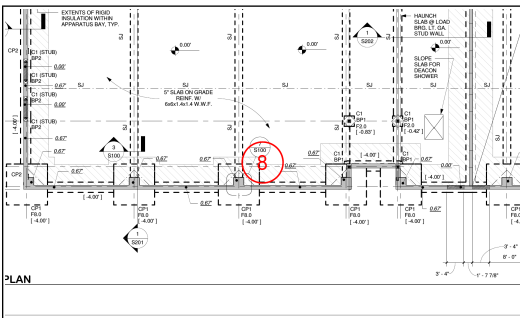
Grading in progress at rear of building.

Photos



Dec 8, 2017 at 12:12pm

#177 December 8th



Sheet
S100

Status
Open

Created
Dec 8, 2017 at 12:11pm
mfaenza@crec.org

Last Updated
Dec 8, 2017 at 12:12pm

Description

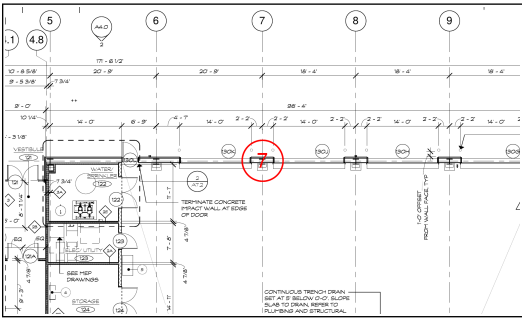
Metal roof liner panel has been installed.

Photos



Dec 8, 2017 at 12:11pm

#175 December 7th



Sheet
A1.0

Status
Open

Created
Dec 7, 2017 at 3:34pm
mfaenza@crec.org

Last Updated
Dec 7, 2017 at 3:35pm

Description

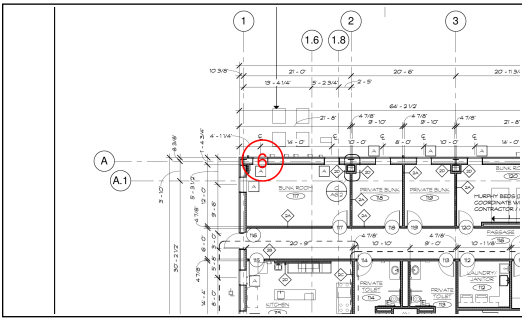
Masonry veneer sheathing and trim has been completed at apparatus bay doors.

Photos



Dec 7, 2017 at 3:34pm

#174 December 6th



Sheet
A1.0

Status
Open

Created
Dec 6, 2017 at 11:52am
mfaenza@crec.org

Last Updated
Dec 6, 2017 at 11:53am

Description

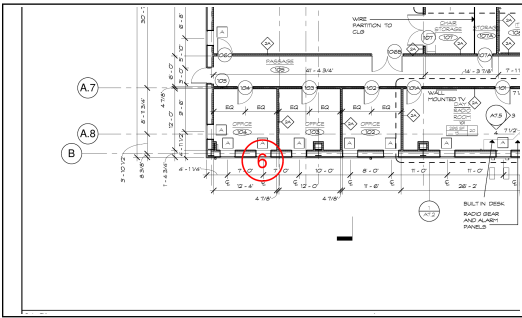
Openings for windows have been installed.

Photos



Dec 6, 2017 at 11:53am

#173 December 6th



Sheet
A1.0

Status
Open

Created
Dec 6, 2017 at 11:52am
mfaenza@crec.org

Last Updated
Dec 6, 2017 at 11:52am

Description

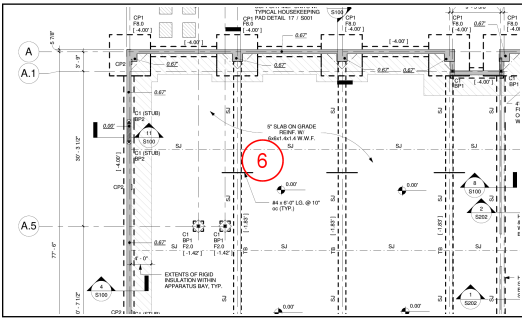
Openings for windows have been installed.

Photos



Dec 6, 2017 at 11:52am

#171 December 6th



Sheet
S100

Status
Open

Created
Dec 6, 2017 at 11:20am
mfaenza@crec.org

Last Updated
Dec 6, 2017 at 11:50am

Description

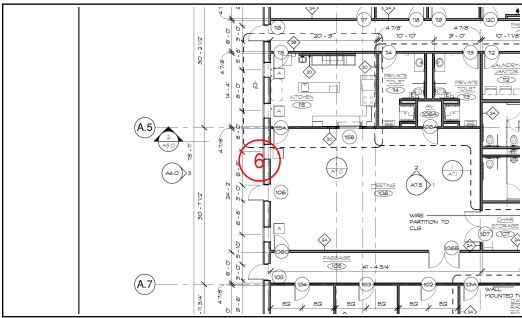
Optoliner roof liner and liner panels are being installed for building roof.

Photos



Dec 6, 2017 at 11:21am

#170 December 6th



Sheet
A1.0

Status
Open

Created
Dec 6, 2017 at 11:19am
mfaenza@crec.org

Last Updated
Dec 6, 2017 at 11:20am

Description

Water table and trim has been installed.

Photos



Dec 6, 2017 at 11:19am

North Stonington Emergency Services Building
